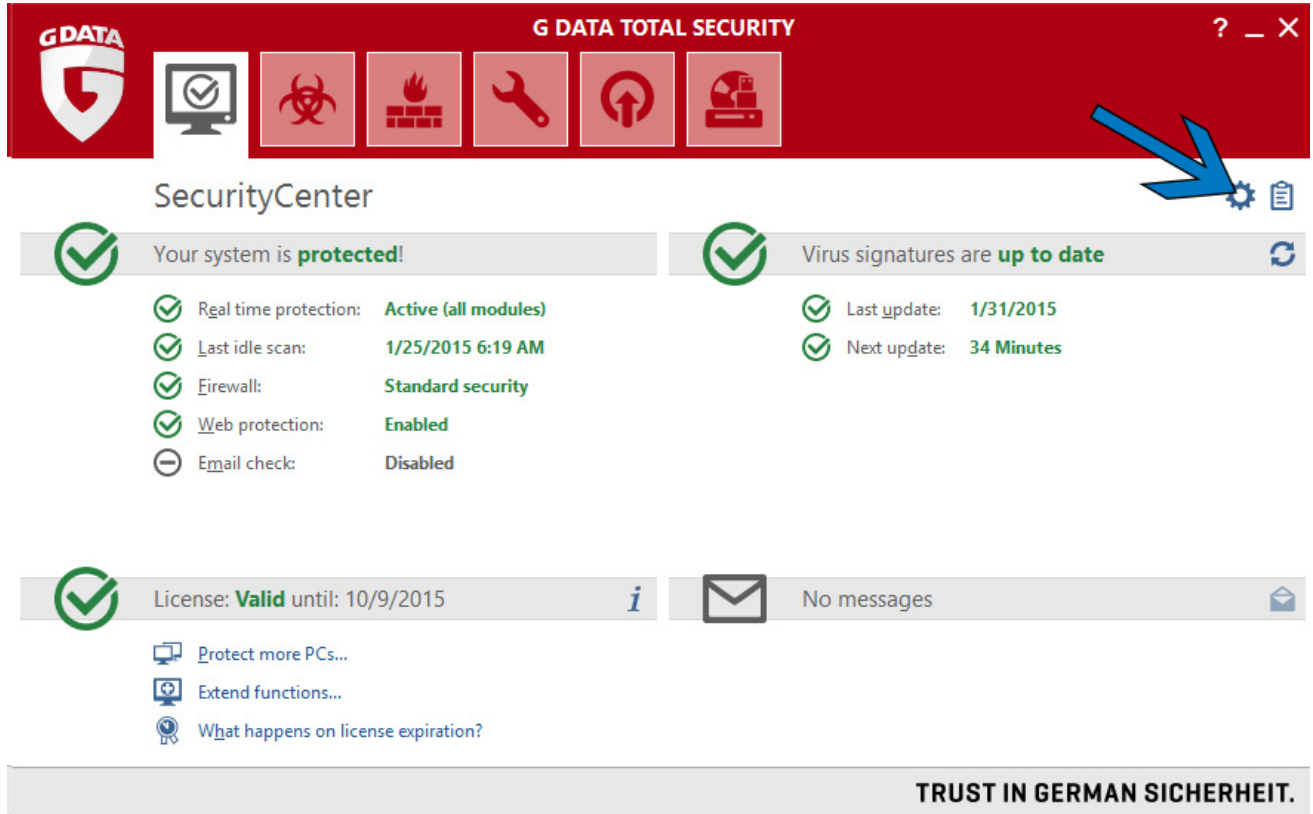


# Step 1

Click the setting button in your G Data window



**G DATA TOTAL SECURITY** ? \_ X

**SecurityCenter**

**Your system is **protected!****

- Real time protection: **Active (all modules)**
- Last idle scan: **1/25/2015 6:19 AM**
- Firewall: **Standard security**
- Web protection: **Enabled**
- Email check: **Disabled**

**Virus signatures are **up to date****

- Last update: **1/31/2015**
- Next update: **34 Minutes**

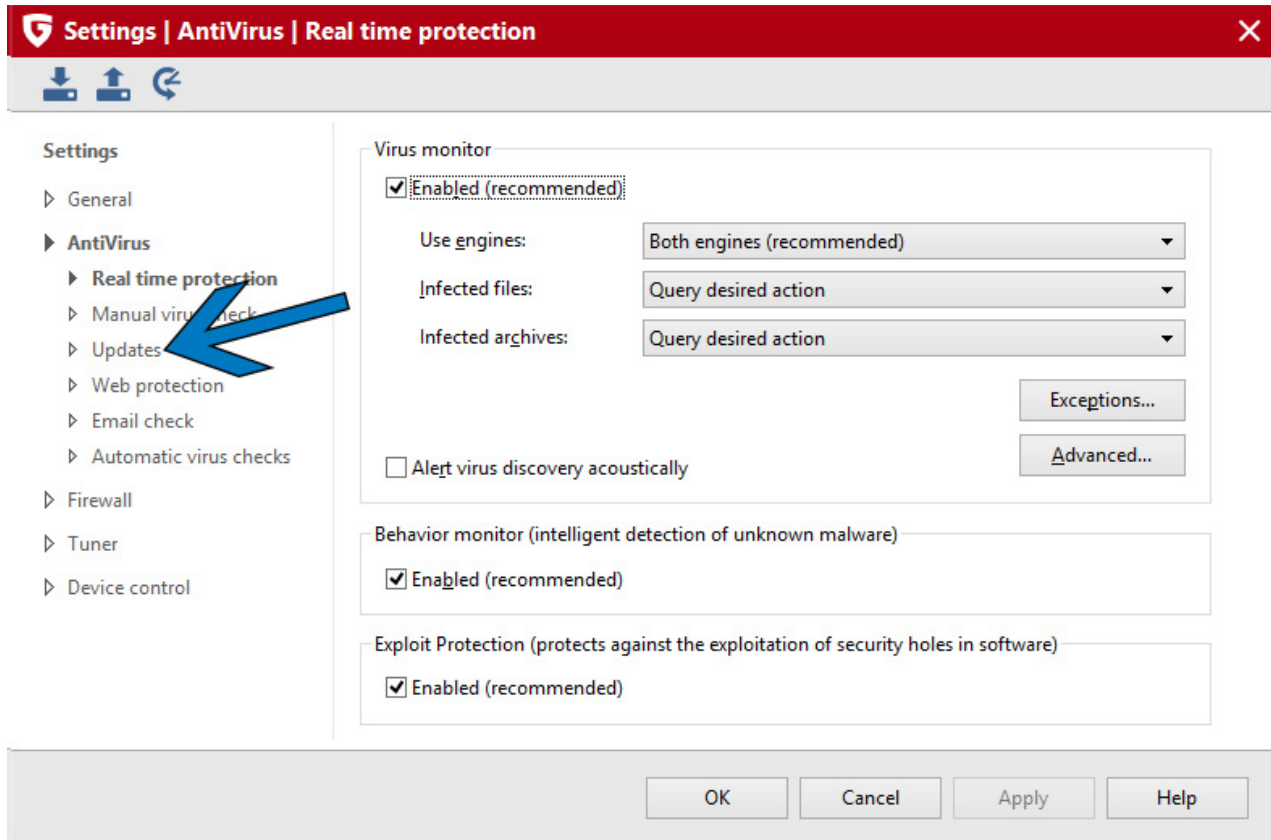
License: **Valid** until: 10/9/2015 *i* No messages

- Protect more PCs...
- Extend functions...
- What happens on license expiration?

**TRUST IN GERMAN SICHERHEIT.**

# Step 2

Under the Antivirus option on the left side, click Updates



# Step 3

Click Activate License on the right side of the screen

Settings | AntiVirus | Updates

Enter the access data here for a license that has already been activated and click on "OK".  
To activate a new license for the first time, click on "Activate license".

User name:

Password:

[Access data lost?](#)

Update virus signatures automatically (recommended)

Generate log

Run

Every 1 hour(s)

Daily (during Internet activity)

Hourly (during Internet activity)

Activate license...

Internet settings...


Virus signature import/export...

Version check

OK Cancel Apply Help

# Step 4

Enter the key you received in your email into the Registration Number field. Fill out the rest of the information with your personal contact information. Once done, click Login.

 **Logon to update server** ✕

Please enter your registration number and contact details here. The access data for your updates will then be automatically entered into your G DATA TOTAL SECURITY and also sent to your email address.

Registration number

Fast login (required fields only)       Full login

Customer data

First name:\*

Last name:\*

Email:\*

Email confirmation:\*

I agree that data provided by me and data arising from usage may be stored and used for promotional offers targeted at me.

⋮

# If You Have More Than One Computer

After the first computer, you will use the access data that you receive from G Data once you have activated your key. Follow steps 1 and 2 again, but on the third step instead of clicking activate license you will just enter the username and password you received from G Data in your email into the fields on the Update Screen. Once you have entered it, click ok and the computer will be updated.

Settings | AntiVirus | Updates

Enter the access data here for a license that has already been activated and click on "OK".  
To activate a new license for the first time, click on "Activate license".

User name:

Password:

[Access data lost?](#)

Activate license...

Internet settings...

Virus signature import/export...

Version check

Update virus signatures automatically (recommended)

Generate log

Run

Every  hour(s)

Daily (during Internet activity)

Hourly (during Internet activity)

OK Cancel Apply Help

## If You Have Any Questions

Feel free to call us at 501-203-TECH (8324) or chat live at

[GREENDRAGON.TECH](http://GREENDRAGON.TECH)



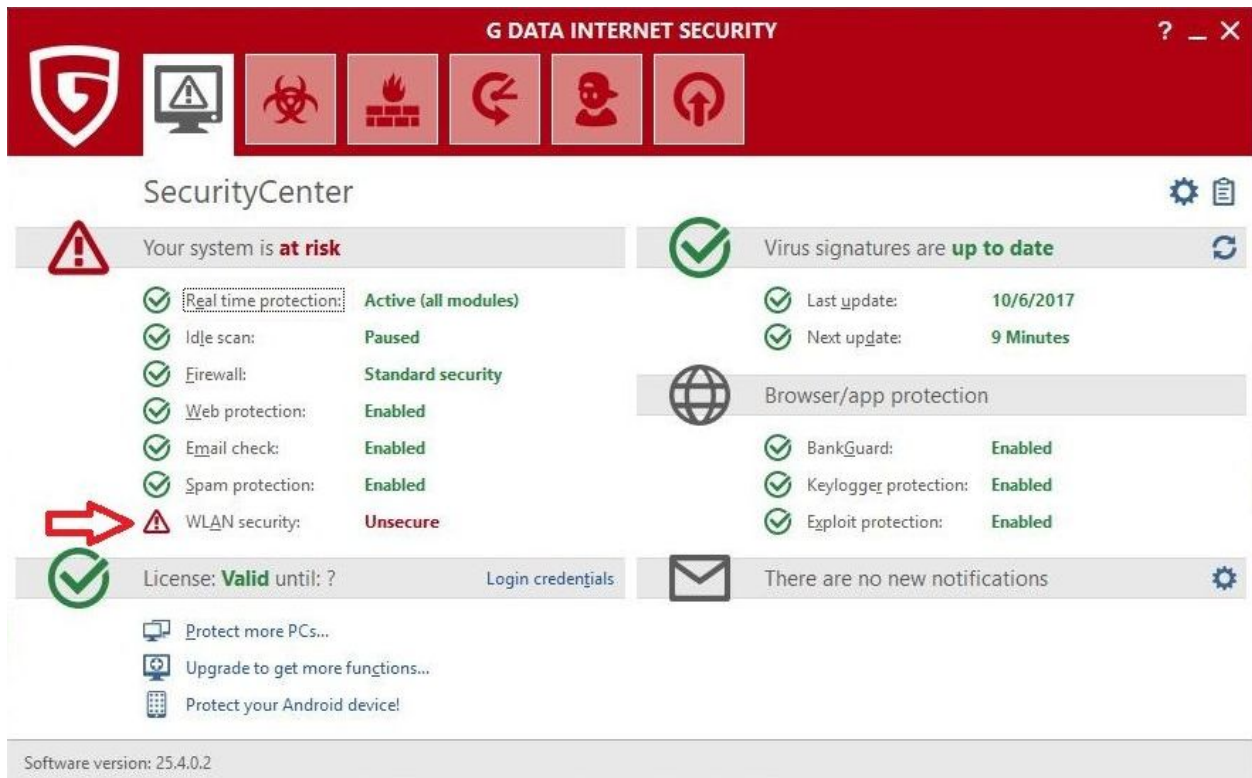
# Fix Wi-Fi Encryption

Often G Data will determine your Wi-Fi encryption is not at the Business Enterprise level and give you a false alarm about your encryption. This is completely normal and sometimes confusing. This is easily remedied by doing the following:

## Step 1

-Open the G Data panel by double clicking the icon from the desktop or Taskbar

-Click on WLAN Security



# Step 2

-Click on "Show unsecure wireless networks"

The screenshot displays the G DATA Internet Security interface. At the top, a red header bar contains the title "G DATA INTERNET SECURITY" and several icons representing different security modules. Below the header, the main area is titled "SecurityCenter" and shows a "Your system is at risk" warning. A list of security features is shown, including Real time protection (Active), Idle scan (Paused), Firewall (Standard security), Web protection (Enabled), Email check (Enabled), Spam protection (Enabled), and WLAN security (Unsecure). A red circle highlights the "Show unsecure wireless networks..." link under the WLAN security section. Other sections include Virus signatures (up to date), Browser/app protection (BankGuard, Keylogger, Exploit protection all enabled), and a notification area stating "There are no new notifications". The software version is 25.4.0.2.

**G DATA INTERNET SECURITY**

### SecurityCenter

**Your system is at risk**

- Real time protection: **Active (all modules)**
- Idle scan: **Paused**
- Firewall: **Standard security**
- Web protection: **Enabled**
- Email check: **Enabled**
- Spam protection: **Enabled**
- WLAN security: **Unsecure**

**Show unsecure wireless networks...**

**Virus signatures are up to date**

- Last update: **10/6/2017**
- Next update: **8 Minutes**

### Browser/app protection

- BankGuard: **Enabled**
- Keylogger protection: **Enabled**
- Exploit protection: **Enabled**

There are no new notifications

Software version: 25.4.0.2

# Step 3

-Check the box "Do not report this wireless network again"

-Click OK and close G Data

